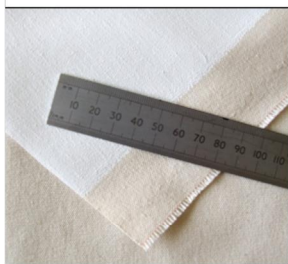


# Harris Moore

Bespoke Canvases - Art Supplies - Framing

## Compare the Harris Moore Range of Canvases - Features & Options

Features & Options Available	Gallery Lite Canvases 32mm	Gallery Canvases 25mm	Gallery Canvases 45mm	Pro 12oz Canvas 25 or 40mm	Pro Superfine Cotton 25 or 40mm	Pro Med or Fine Linen 25 or 40mm
Any Size Made (Bespoke)	✓	✓	✓	✓	✓	✓
Primed	✓	✓	✓	✓	✓	✓
Unprimed		✓	✓	✓		✓
10oz Canvas	✓					
12oz Canvas		✓	✓	✓		
Superfine Canvas					✓	
Medium Linen						✓
Fine Linen						✓
Fully Expandable Frames	✓	✓	✓	✓	✓	✓
Hardwood Stretchers	✓	✓	✓	✓	✓	✓
25mm Deep Stretcher		✓				
32mm Deep Stretcher	✓					
45mm Deep Stretcher			✓			
25mm Deep Extra Wide Stretcher				✓	✓	✓
40mm Deep Extra Wide Stretcher				✓	✓	✓
Cross Bracing Every 90cm	✓	✓	✓	✓	✓	✓
Extra Wide Cross Braces				✓	✓	✓
Corner Wedges Included	✓	✓	✓	✓	✓	✓
Wedge Retainers Included				✓	✓	✓



Finest Canvases and Italian Linens



Solid Wood Moulded Stretcher Bars



8x Birch Ply Wedges



Any Size Canvas Made

### All Harris Moore Bespoke Canvases are made to order.

Exact sizes are available (2-3mm tolerance) in Metric or Imperial. Please cost at next size up e.g. if you need a canvas 55cm x 75cm select a canvas 60cm x 80cm. Please enter the exact size you need in the text box provided (website) or tell us when ordering by phone or email.

Crossbars are used on all canvases with one dimension longer than 90cm / 36". Notched double cross bars are used on canvases where both dimensions are greater than 90cm / 36". All Harris Moore Stretcher Frames and Cross bars have jointed ends for frame expansion.

### Discounts

If you would like to know more about our Trade discount scheme please call us on 0121 6333687

Also available from Harris Moore; Sketchbooks, Brushes, Canvas Hangers, Easels and many other Artists accessories.

Please visit our web site or call for details.

[www.harrismoorecanvases.co.uk](http://www.harrismoorecanvases.co.uk)

Unit 12 Minerva Works, 158 Fazeley St, Birmingham, B5 5RS